

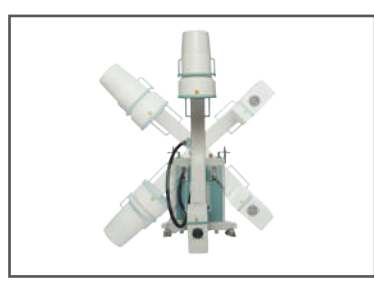


KIRAN^{*}

INFINITY C-ARM



TECHNOLOGY MADE FRIENDLY



AERB & BIS Approved

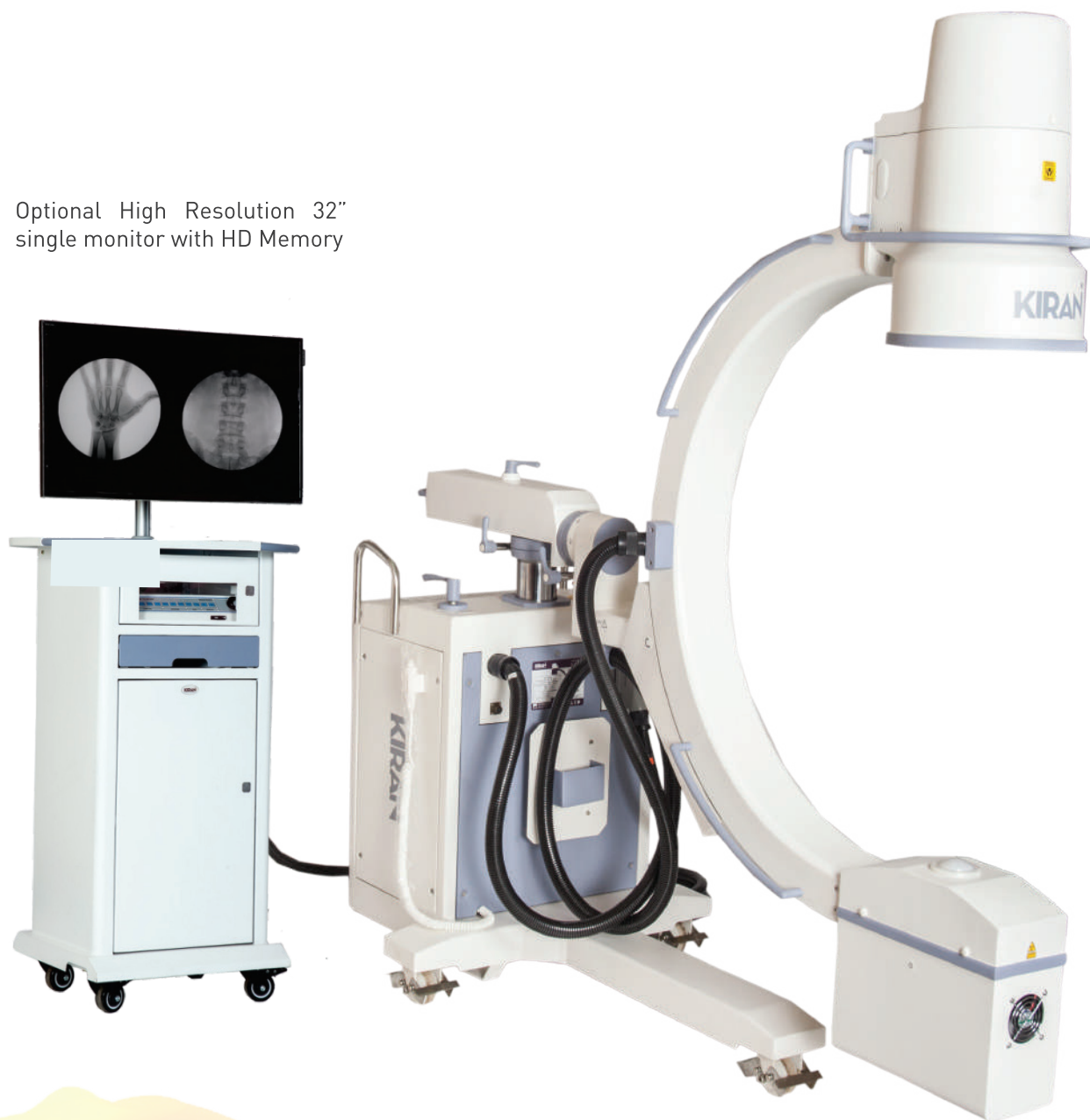


Cutting-Edge Technology

A State-of-the-Art C-Arm system using a high quality Image Intensifier to provide high contrast images. Accurate, Reliable and Durable.

The Infinity C-Arm features an intuitive software for convenient selection from multiple configurations and provides a user friendly keyboard interface at an affordable price point.

Optional High Resolution 32" single monitor with HD Memory





Functionality

- Mobility in a compact design with intuitive positioning
- Image acquisition-processing-management-storage
- Better view and high quality imaging on LED monitor
- Super Harmonic Controlled Frequency Generator

Software

- Storage of Last image and permanent storage of 100 images (optional PC memory & digital processing software)
- Real time image rotation
- High resolution image capture
- Digital zoom
- USB memory stick support for image backup

Model : Infinity

Output power : 3.5 kW

Max kV : 110 kV

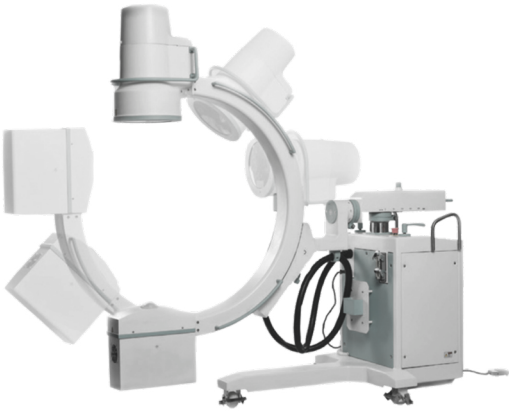
Infinity C-Arm High Frequency 3.5 kW

Memory Unit : 100 Images permanent Storage with Pen Drive
& LAN option (optional PC memory)

Monitors : High Resolution 17" (2 Nos.)

Optional item at additional cost : HD memory with 32 inch monitor
1K x 1K Imaging Chain

Radiographic Mode & ABS Mode



- Orbital Movement : 125°
- Free space : 780 mm (±10 mm)
- SID : 980 mm (±10 mm)

- 200 mm (± 10 mm) Horizontal C-Arm run, with manual brake for locking



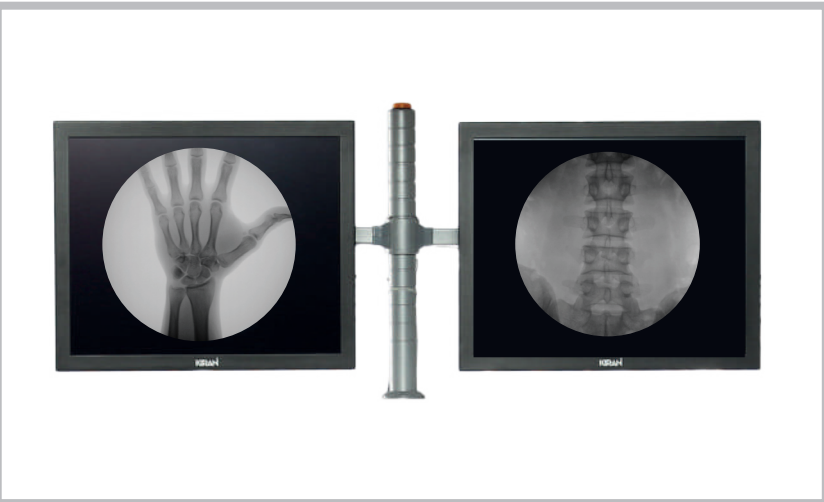
- 270° C-Arm rotation on each side, with manual brake for locking

- 12.5° (± 1°) C-Arm Swivel on each side with manual brake for locking





- Wide coverage with 9" image intensifier
- Excellent image quality – Use of 103 L / inch, 8:1 anti-scatter grid (SID=98 cm, Dia=9 inch)



- Display of live image with "Last Image Hold" feature
- Image post processing for live / stored images
- User selectable brightness, contrast for displayed images



- Stationary Anode



User friendly, intuitive keypad with displays with advanced features for wider clinical applications

- Pulse Fluoroscopy
- Low Dose Fluoroscopy
- Boost Fluoroscopy
- Single shot Fluoroscopy

Also has control and display for self-diagnostic maintenance and software for online support



KIRAN^{*}

www.trivitron.com | www.kiranxray.com

A Division of **TRIVITRON** Healthcare

 /Trivitronindia

 /Trivitronindia

 /company/trivitron-healthcare

 /TrivitronHealthcare