

Powered by

Glasgow ECG Interpretation  
Algorithm



# Experience the Trace Quality



Twelve Channel Electrocardiograph  
**BPL** CARDIART® *GenX 12* Series



*Happier Living Everyday*

1 CARDIART *GenX 12i*

2 CARDIART *GenX 12i+*

Follow us @bplmedtech



[www.bplmedicaltechnologies.com](http://www.bplmedicaltechnologies.com)





## Twelve Channel Electrocardiograph

# BPL CARDIART® GenX 12 Series



### Twelve Channel ECG Recording with unique Trace Darkness Control

ECG Trace Print on 210mm (Z-fold & Roll) / 216mm (Roll) Wide Paper with Selectable Darkness Feature.



### Distinct Visual Identities to suit diverse Use-scenarios

Fixed Tilt and Variable Tilt Configurations, Multiple Battery Pack Capacities, and ECG Record Storage Options.



### Color TFT Screen with Touch Option \*

Experience enhanced viewing with a wide 8/9-inch color display, offering clear visualization of 12-lead ECG waveforms and results.



### QWERTY Keypad & One-Touch Function keys

Color-Coded Silicone Keys, QWERTY Keypad, and Navigation Keys for Intuitive Usage



### Advanced ECG Analysis & Interpretation

Gender, Age & Race specific ECG Analysis - University of Glasgow Interpretation Algorithm



### Multiple Connectivity Options \*

USB Drive Export, USB Direct Print Feature, Multiple FTP upload Profile



### Paperless Workflow \*

PDF, HL7 Export options for easy Data access, Transfer and Storage



### Arrhythmia Detection

Extends Rhythm Capabilities, reduces paper consumption and improves diagnostic yield



### Freeze Feature

Up to Two minute scrollable trace view for all 12-leads

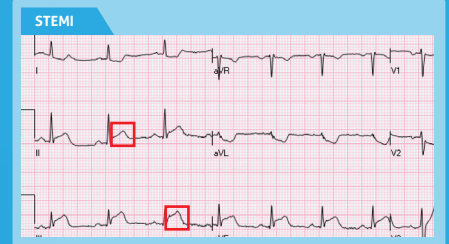
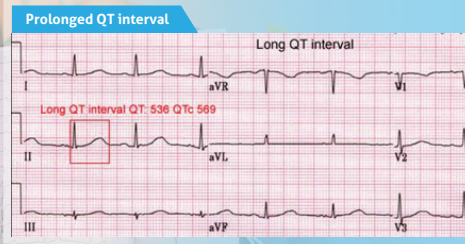


### Ergonomic Design

Enhanced portability with built-in power supply, rechargeable Li-ion battery pack, and telescopic handle.

\* Compatible with selected printers only  
# Optional feature

Your Needs  
are Well Heard



## Product Specifications

PARAMETERS	CARDIART GENX12i+	CARDIART GENX12i
<b>Power supply</b>	100 to 240VAC; 50/60 Hz	
<b>Power consumption</b>	Less than 120VA	
<b>Battery</b>	Rechargeable Lithium battery pack 14.8Vdc, 3000mAh	
<b>Battery Capacity</b>	Auto Mode: 250 ECG's in 12x1 print format @25 mm/sec, 10mm/mV, Normal trace & Interpretation - Minimal	
<b>Mains protection</b>	Fuse: T3.15A 250 VAC	
<b>Battery Protection</b>	In built PCM Module	
<b>Battery Charging time</b>	Approximately 4 hours 30 minutes from total discharge (Unit off)	
<b>ECG Acquisition</b>	12 bits for DC offset & 12 bits for ECG Signal; 1000 samples/sec/channel;	
<b>ADC Resolution</b>	2.55 $\mu$ V/LSB	
<b>Input Dynamics</b>	DC offset: $\pm$ 300mV; AC Differential: $\pm$ 5mV in the pass band	
<b>Battery Charging time</b>	Standard 12 leads or Cabrera; Acquired 8 leads & Reconstructed 4 leads (Lead III, Lead aVR, Lead aVL, Lead aVF)	
<b>Recording sensitivity</b>	Manual: 2.5 - 5 - 10 - 10/5m/mV $\pm$ 5% Auto: dependent on the signal strength, Optimizes automatically to 2.5-5-10-20mm/mV $\pm$ 5%	
<b>Input Impedance</b>	Greater than 10M $\Omega$ @ 10Hz	
<b>Frequency Response</b>	0.05Hz to 150Hz (-3dB) without Mains / Muscle and ADF Filters	
<b>Time constant</b>	Greater than 3.2 seconds	
<b>CMRR</b>	Greater than 90dB @ 50Hz	
<b>DF Protection</b>	Internal	
<b>ECG Analysis &amp; Interpretation</b>	Gender, Age & Race specific Advanced ECG Analysis & Interpretation - University of Glasgow	
<b>ECG analysis sampling rate</b>	500 samples/second (sps)	
<b>Filters</b>	Mains interference/ Muscle filter: Linear phase digital 50Hz Notch filter with selectable 32Hz Filter. Anti-drift filter: Selectable Digital 0.5Hz Anti Drift High pass linear phase filter	
<b>Pacemaker recognition</b>	Recognizes pulse in accordance with applicable IEC standards	
<b>Signal Memory</b>	Auto Mode: 10 Seconds per Lead; Two-Minute Scrollable Trace View for All 12 Leads; Long Lead Mode: 1 Minute (or 20 Seconds for 3 Leads) Disclosure for Single Lead.	
<b>Operating modes</b>	Manual – acquisition and printing in real time Auto – simultaneous acquisition and printing	
<b>Heart rate meter</b>	30 to 240BPM $\pm$ 10% or $\pm$ 5BPM, whichever is greater	



## Product Specifications

PARAMETERS	CARDIART GENX12i+	CARDIART GENX12i
<b>Display</b>	8" Touch Color TFT LCD with 800x480 Pixel Resolution and Adjustable Tilt Angle	9" Color TFT LCD with 800x480 Pixel Resolution and Fixed Tilt Angle
<b>Keyboard</b>	Silicone Rubber keypad with tactile feedback - 69 keys & 3 LED indicators	
<b>Indicators</b>	Mains Connection, Battery Charging, Battery Low & System Errors	
<b>Audible Beep</b>	Heart Rate and Key Press	
<b>Startup Time</b>	Less than 4 seconds	
<b>Record Storage</b>	800 ECGs in internal memory	400 ECGs in internal memory
<b>Recording system</b>	Thermal printer, 8 dots/mm, 216mm usable print width.	
<b>Paper transport speed</b>	5mm/sec or 6.25mm/sec or 12.5mm/sec or 25mm/sec or 50mm/sec	
<b>Thermal Paper</b>	Roll with pre-printed grid & perforation: <ul style="list-style-type: none"> <li>Width 216mm, Length 15m</li> <li>Width 210mm, Length 15m</li> </ul> Z-fold with pre-printed grid & perforation: Width 210mm x 295 mm, 100 sheets	
<b>Print channel</b>	12 Channels	
<b>Print formats</b>	Manual: 3x1, 6x1, 12x1 Auto: 12x1, 6x2, 3x4, 6x2 +1 Rhythm, 3x4 +1 Rhythm, 3x4 +3 Rhythm Long Lead: 1 lead for 60 second duration, 3 leads for 20 second durations	
<b>PC connectivity</b>	ECG transfer to PC through RT-VIEW SOFTWARE(Optional)	
<b>Paper Save Feature</b>	Simultaneous ECG acquisition and saving	
<b>Paperless Workflow</b>	ECG Data Export in multiple formats	
<b>HL7 Integration</b>	HL7 3.0 Export on USB, Ethernet interfaces.	
<b>FTP Server Upload</b>	ECG Data upload onto selectable ftp servers in PDF, RAW & HL7 formats	
<b>Operating Temperature</b>	+10 to +40°C	
<b>Relative Humidity</b>	Upto 95% RH non-condensing	
<b>Storage/Transport Temperature</b>	-10 to +50°C	
<b>Safety Classification</b>	Class I with internal power supply	
<b>Degree of protection</b>	Type CF	
<b>Dimension</b>	Approx. 420mm x 320mm x 102mm (length x width x height)	Approx. 420mm x 320mm x 128mm (length x width x height)
<b>Weight</b>	Approx. 4.5 Kgs (Including battery, without paper)	
<b>Standard Accessories</b>	Patient Cable: 1 No. Limb Electrodes: 4 Nos. Chest Electrodes: 6 Nos. Thermal Paper Roll / Thermal Paper Z-Fold: 1 No. User's Manual: 1 No. Power Cord: 1No. Earth Cable: 1 No.	

\*Technical specification subject to change

ISO 13485:2016 CERTIFIED COMPANY  
ISO 9001:2015 CERTIFIED COMPANY

### BPL Medical Technologies Private Limited

Regd. Office: 11th KM, Bannerghatta Road,  
Arakere, Bangalore - 560076, India.  
Toll Free: 1800-4252355  
Website: www.bplmedicaltechnologies.com  
For Enquiries: sales.medical@bplin  
CIN: U33110KA2012PTC067282



Happier Living Everyday