

TECHNICAL SPECIFICATIONS

Drug / Excipient	
Drug	Sirolimus
Drug Dose	1.27 µg/mm ²
Drug Carrier	Phospholipid
Balloon	
Balloon Material	Polyamide
Catheter Design	RX/Monorail
No. of folds	3**
Compliance	Semi-compliant

** 2 folds in 1.50 mm diameter

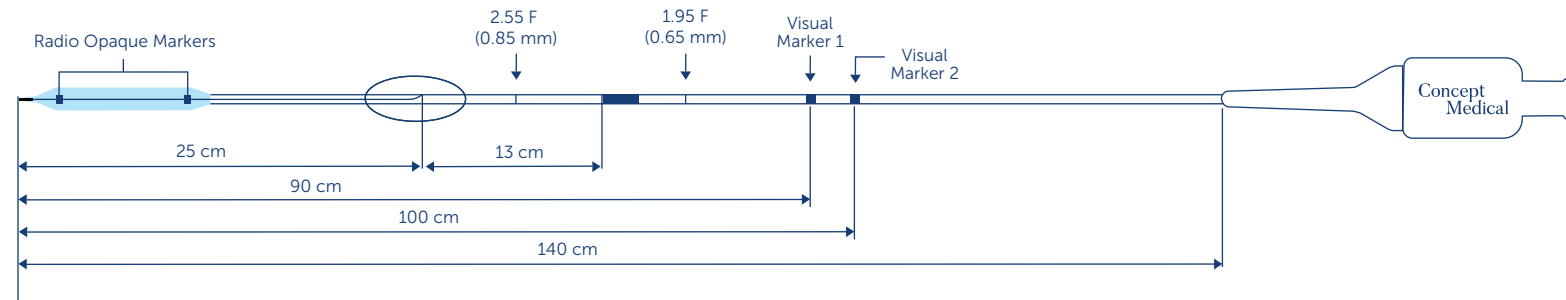
Delivery System	
Shaft Diameter - Proximal	1.95 F
Shaft Diameter - Distal	2.67 F
Usable Catheter Length	140 cm
Tip Profile	0.016"
Nominal Pressure	8 bar
Rated Burst Pressure	14 bar*
Guiding Catheter Compatibility	6F
Guidewire Compatibility	0.014" maximum recommended
Crossing profile (varies with size)	0.029"

We highly recommend preparing the vessel bed before treatment with MagicTouch - SCB

*Do Not Exceed RBP

ORDERING INFORMATION

Balloon Dia(mm)	Balloon Length (mm)						
	10	15	20	25	30	35	40
1.50	CMN15010	CMN15015	CMN15020	CMN15025	CMN15030	CMN15035	CMN15040
2.00	CMN20010	CMN20015	CMN20020	CMN20025	CMN20030	CMN20035	CMN20040
2.25	CMN22510	CMN22515	CMN22520	CMN22525	CMN22530	CMN22535	CMN22540
2.50	CMN25010	CMN25015	CMN25020	CMN25025	CMN25030	CMN25035	CMN25040
2.75	CMN27510	CMN27515	CMN27520	CMN27525	CMN27530	CMN27535	CMN27540
3.00	CMN30010	CMN30015	CMN30020	CMN30025	CMN30030	CMN30035	CMN30040
3.50	CMN35010	CMN35015	CMN35020	CMN35025	CMN35030	CMN35035	CMN35040
4.00	CMN40010	CMN40015	CMN40020	CMN40025	CMN40030	CMN40035	CMN40040



*The above diagram is just an illustration of the product.

Disclaimer: The law restricts these devices to sale by or on the order of a physician. Indications, contradictions, warnings can be found in the product labelling / IFU supplied with each device. For restricted use only in countries where product is registered with applicable health authorities.



Concept Medical

f t @ in /conceptmedicals

✉ info@conceptmedical.com

🌐 www.conceptmedical.com

Scan for more details



CB.BA.MN.BRO.ver.1.0.21-02

Concept Medical

MagicTouch SCB

SIROLIMUS COATED BALLOON CATHETER

SIROLIMUS

CORONARY ARTERY DISEASE

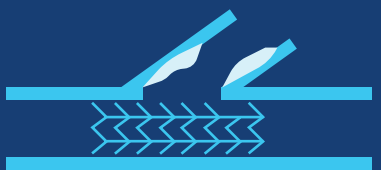
MAGICTOUCH SCB

MagicTouch - SCB is a Sirolimus Drug Coated Balloon catheter for the treatment of the coronary arteries; intended for treating In-Stent Restenosis, Small Vessels, Bifurcations lesions and De-Novo lesions.



DE-NOVO LESIONS

Concept of treating with leaving Nothing behind in patients with highly susceptible restenosis rate due to inherent disease conditions and comorbid conditions.



BIFURCATION LESIONS

Addresses the issue of metal to artery ratio by allowing one stent technique and less complications in side branch.



IN-STENT RESTENOSIS

Addresses the issue of restenosis by homogenous drug distribution without further increasing metal load in diffuse, focal and edge stenosis.



SMALL VESSELS

Helps in treating challenging anatomies in small diameter without losing lumen diameter.

UNIQUE COATING TECHNOLOGY

MagicTouch - SCB is developed with Nanolute Technology which possesses unique circumferential coating technology that facilitates homogeneous drug distribution to target lesions



COATING

Circumferential Coating is performed under Low Pressure inflation leading to 100% surface area coating



REFOLDING

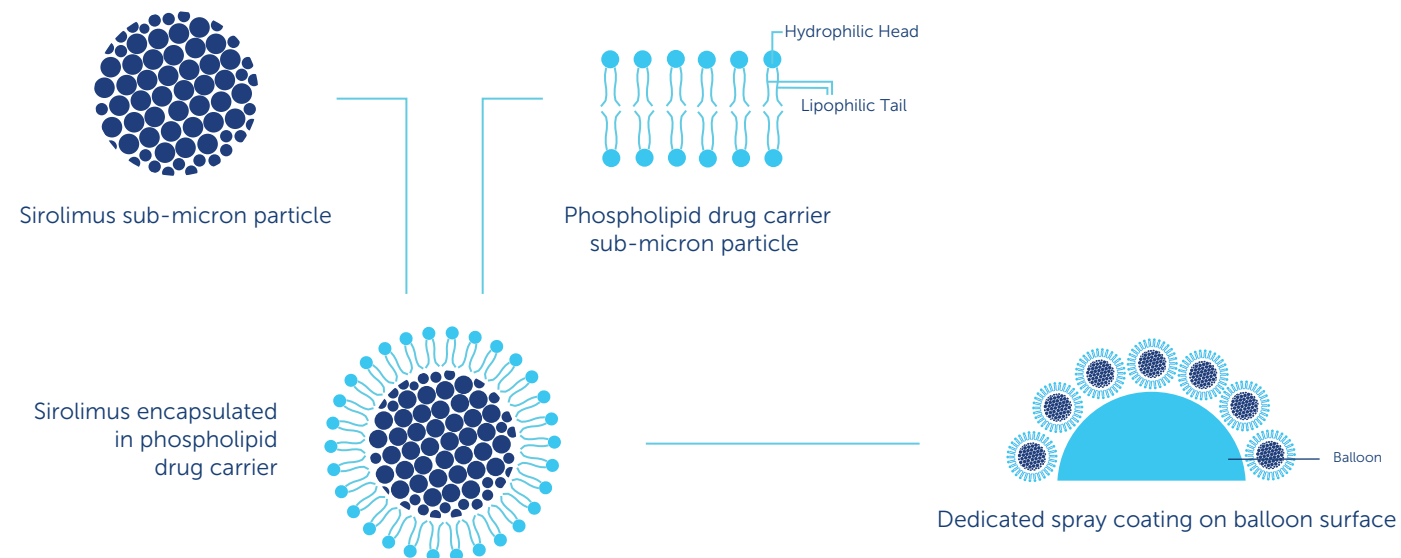
3 Folds



INFLATION

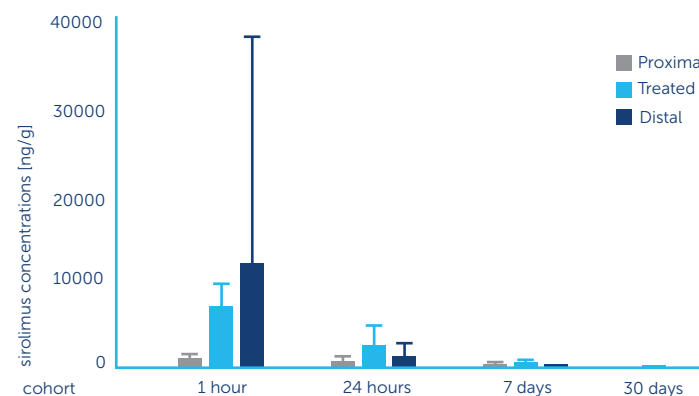
Homogeneous Drug Delivery due to Circumferential Coating

NANOLUTE TECHNOLOGY

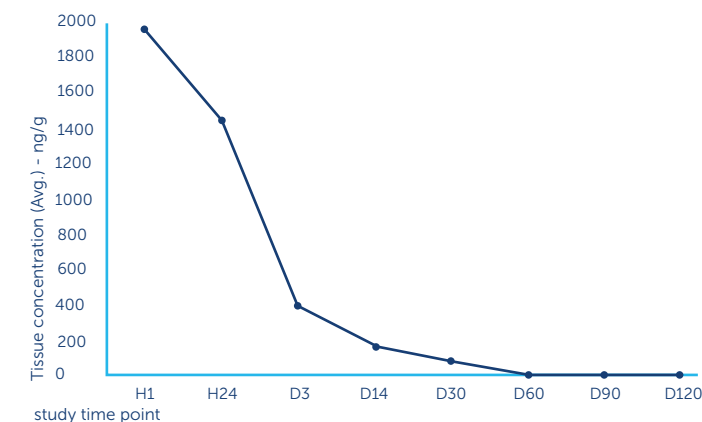


PHARMACOKINETIC STUDY

In ISR Lesion*



In De-Novo Lesion

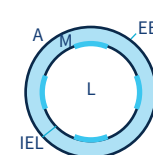


*Study Ongoing

SIROLIMUS DISTRIBUTION STUDY

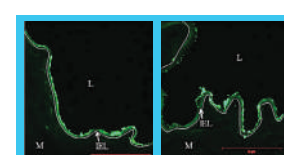
DTF labelled Sirolimus was used to assess the drug distribution following DCB treatment*

1 HR

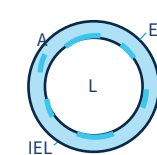


Intima

60-70% above IEL

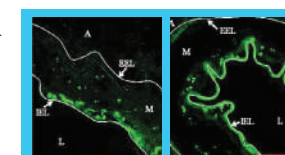


DAY 3

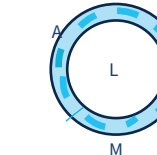


Media

30-40% within Media

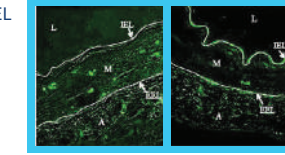


DAY 7



Adventitia

30-40% below IEL



A: Adventitia; EEL: External Elastic Lamina; IEL: Internal Elastic Lamina; L: Lumen; M: Media *EuroIntervention. 2013 May 20;9(1): 148-56