

Experience the Brilliance

BPL Medical[®]
Technologies



MULTI PARAMETER MONITOR
BPL VIVID VUE 12

CE 0123



Happier Living Everyday



Follow us @bplmedtech



www.bplmedicaltechnologies.com



High Resolution Display

Vivid Vue 12 - 12.1" Display (Optional Touch Screen)



Enhanced Connectivity Solution

Central nursing station, HL7 with HIS connectivity, USB for Screenshot & trend data transfer, DVI for external display*, Nurse call function*



Standard Configuration

Increased clinical confidence in measuring the basic vital parameters - ECG, SPO2 (BPL OxySat+ / Masimo / Nellcor), NiBP (Suntech), RESP, TEMP



High performance Li-ion Battery

With low power consumption, the battery back-up time is 3.5 hrs.



Optional Parameters & Configuration

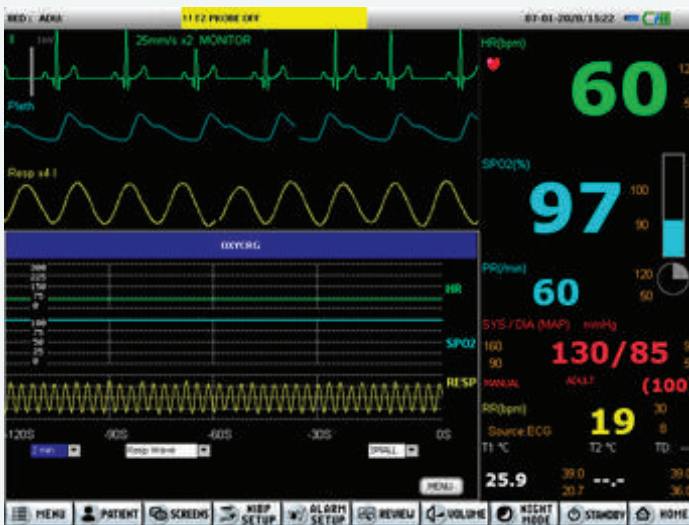
Dual IBP, CO2 analyzer or Anesthesia Gas Monitoring, 12-Lead ECG & Thermal Recorder*



Comprehensive Data Storage

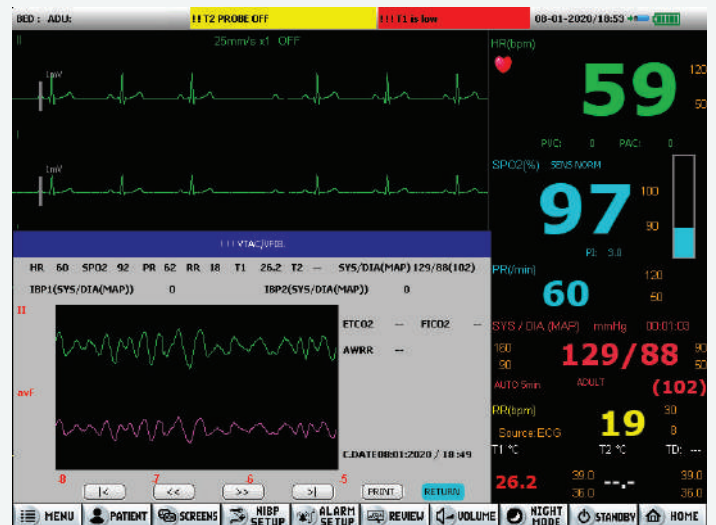
72/96* Hours of Trend Data, 2000 groups of NiBP, 1000 Alarm/Arrhythmia recall - Associated waveform with all parameter data's, Full disclosure of all leads of ECG for 30 min.

*optional



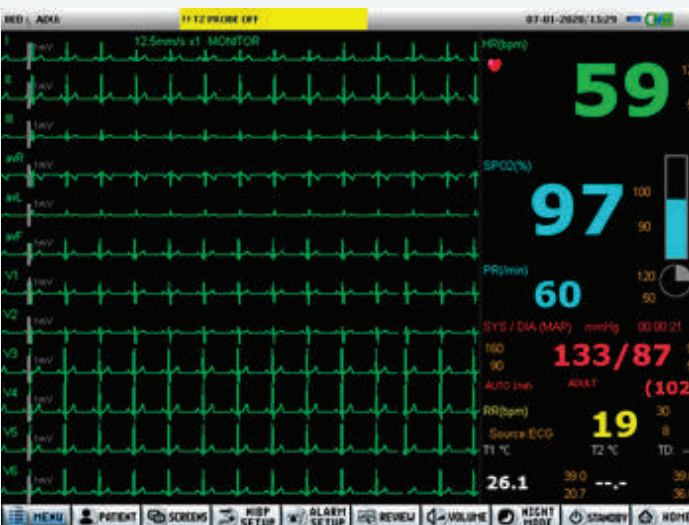
OxyCRG Screen

OxyCRG graphs HR, SPO2 and Respiratory waveform continuously for easy comparison of breathing cessations & HR decelerations



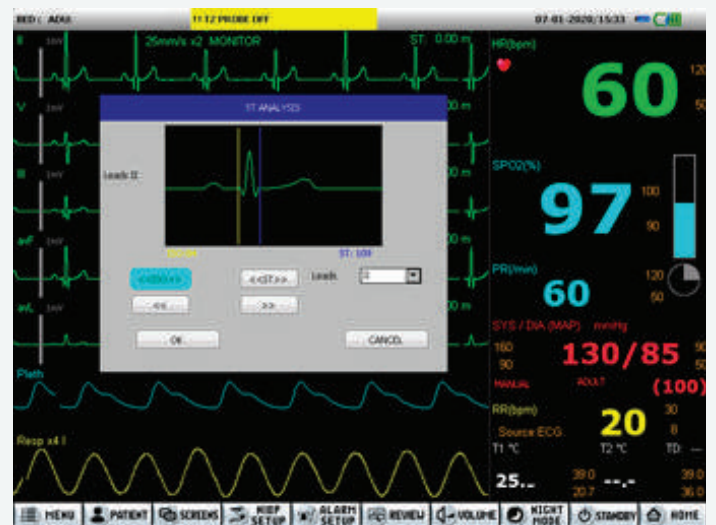
Reviewing Alarms

Physiological Alarms can be reviewed with 16 sec of associated waveform along with other parameter values. Even print out of waveform possible.



12 Lead ECG (Optional)

Monitor has Comprehensive Arrhythmia detection, operator can able to set alarm priorities for Arrhythmia depending on the patient condition.



ST Analysis window

Along with standard automated ST monitoring, Vivid Vue also has manual ST window where the user can set E and J isoelectric positions for ST analysis



Fixed Stand
180°



Flexible Stand
180°

Highest Quality of Patient Care Without Compromise

- Flexible & Efficient monitoring solution across all point of care
- Intuitive interface for Quick & Easy Monitoring
- Convenient feature of Standby, Night Mode & Snapshot

Flexible connectivity

- Vivid Vue is designed to seamlessly integrate with Hospital information System, Central Nursing Station, Nurse call system and Slave display
- Trend data & Screenshot can be transferred to USB.

CO₂ Analyzer



CO₂ analyzer
Model: ISA CO₂
Measures: EtCO₂, FiCO₂, RR



Mainstream CO₂ Analyzer
Model: IRMA CO₂
Measures: EtCO₂, FiCO₂, RR



CO₂ analyzer
Model: BPL Capnview
Measures: EtCO₂, FiCO₂, RR

Anesthesia Gas Monitoring - Masimo



Sidestream Gas Analyzer
Model: ISA AX+ (without O₂)
Measures: CO₂, RR, N₂O, Agent Identification.



Sidestream Gas Analyzer
Model: ISA OR+ (with O₂)
Measures: CO₂, RR, N₂O, O₂, Agent Identification.



Mainstream Gas Analyzer (without O₂)
Model: IRMA AX+
Measures: CO₂, RR, N₂O, Agent Identification

Product Specifications

General	
Display	Vivid Vue 12: 12.1"
Resolution	Pixel : 800×600 pixels
Display information	7 waveforms display /12-Lead ECG interface
Dimension	Vivid Vue 12: 345mm×181mm×292mm
Weight	Vivid Vue 12: < 3.8kg
Built-in battery	Rechargeable Lithium ion battery 14.52V/2600mAh; ≥ 3.5 hrs of backup time
Battery charge time	≤ 3.5 hours
ECG / Respiration Specifications	
Lead Mode	Standard: 5 lead Optional: 12 lead & 3 lead
Heart Rate Range & Accuracy	10 ~ 300 bpm Accuracy: ±1% or ≥ 1bpm, whichever is greater
Gain	2.5 mm/mV (×0.25), 5 mm/mV (×0.5), 10 mm/mV (×1), 20 mm/mV (×2)
Sweep Speed	12.5 mm/s, 25 mm/s, 50 mm/s
ST-Segment	Detection Range -2.0mV to +2.0mV
Respiration Method	Thoracic impedance
RR Measurement range and Accuracy	1-150 breaths per minute Accuracy: ±2 bpm
Delay of Apnea	10s, 15s, 20s, 25s, 30s, 35s, 40s, 45s, 50s, 55s, 60s
NiBP Specifications	
Measurement method	Automatic oscillometry
Measurement range	Systolic: ADULT 40 - 260mmHg PEDIATRIC 40 - 230mmHg NEONATE 40 - 130mmHg
	MAP: ADULT 26 - 220mmHg PEDIATRIC 26 - 183mmHg NEONATE 26 - 110mmHg
	Diastolic: ADULT 20 - 200mmHg PEDIATRIC 20 - 160mmHg NEONATE 20 - 100mmHg
Pressure Transducer Accuracy:	±3 mmHg between 0 mmHg - 300 mmHg for operating conditions between 0°C - 50°C.
Auto Measurement Interval	1min, 2min, 3min, 4min, 5min, 10min, 15min, 30min, 60min, 120min, 240min, 480min, 960min.
STAT Mode	5min
SPO2 Specifications	
Measurement Range & Accuracy	BPL OxySat+ SpO2*: Measurement range: 0%-100%; accuracy: ±2% (70-100%). 0%-69% is not defined. PR measurement: 25-250 pulses/min.
	Masimo SpO2: Measurement range: 1%to100%; accuracy: ±2% (adult/child, in non-motion state), ±3% (adult/child, in motion state) or ±3% (neonate, in motion or nonmotion state) within the measurement range of 70%-100%. 1%-69% is not defined. PR measurement: 25-240 pulses/min.

	Nellcor SpO2: Measurement range: 1% to 100%; accuracy: ±3% (adult/ child, in non-motion state) or ±3% (neonate, in non-motion state) within the measurement range of 70%-100%. 0%-69% is not defined. PR measurement: 20-300pulses/min
Display resolution	1%
Perfusion index (PI)	Masimo SpO2: 0.02%-20%; accuracy: not defined; Resolution: 0.01% (within 0.02%-9.99% range) BPL OxySat+ SpO2: 0%-20%; accuracy: not defined; Resolution: 0.01%
Temperature specifications	
Measurement range	10.0°C-50.0°C (50°F-122°F)
Accuracy	± 0.1°C (± 0.2°F)
Number of channels	2
IBP Specifications	
Number of IBP channels	2
Pressure name	ART (arterial pressure), PA (pulmonary artery pressure), CVP (central venous pressure), RAP (right atrial pressure), LAP (left atrial pressure), ICP (Intracranial pressure), P1, P2.
Measurement range	ART: -50-400 mmHg; PA: -6-120 mmHg; CVP: -10-40 mmHg; LAP: -10-40 mmHg; RAP: -10-40 mmHg; ICP: -10-40 mmHg; P1: -50-400 mmHg; P2: -50-400 mmHg.
Accuracy	±2mmHg or ±1% of the reading, whichever is the greater
Resolution	1 mmHg
Optional - Recording Specifications	
Method	Thermal dot array
Number of waveforms	3
Recording paper width	50mm
Paper length	15 m
Paper speed	12.5 mm/s, 25 mm/s, 50 mm/s
Recording way	Real-time recording, alarm recording
Environmental Specification	
Operating temperature	+5°C to +40°C
Operating humidity	15% to 85% (non-condensing)
Operating atmospheric pressure	700hPa to 1060hPa
Transportation and storage temperature	-20°C to +55°C
Transportation and storage humidity	10% to 93% (non-condensing)
Transportation and storage atmospheric pressure	500hPa to 1060hPa
Power Specifications	
Input voltage	100V-240V AC
Frequency	50Hz/60Hz
Earth leakage current	< 0.3 mA
Input current	1-0.6A
Standard requirement	According to IEC 60601-1 and IEC 60601-1-2

Technical specification subject to change

ISO 13485:2016 CERTIFIED COMPANY
ISO 9001:2015 CERTIFIED COMPANY

BPL MEDICAL TECHNOLOGIES PRIVATE LIMITED

Regd. Office: 11th KM, Bannerghatta Road,
Arakere, Bangalore - 560076, India.

Toll Free: 1800-4252355

Website: www.bplmedicaltechnologies.com

For Enquiries: sales.medical@bpl.in

CIN: U33110KA2012PTC067282

OBELIS S.A
Bd. Général Wahis, 53, 1030 Brussels,
Belgium. E-mail: mail@obelis.net

Good at Heart®
A BPL Medical Technologies Initiative

Wake up to
Wellness®
A BPL Medical Technologies Initiative



Happier Living Everyday