

**meriT Trails:**  
Consistent clinical safety & efficacy in more than 1650 patients up to 5 years.

meriT-I	meriT-II	meriT-III
<ul style="list-style-type: none"> <li>Single center, FIM</li> <li>30 Patients(30Lesions)</li> <li>8-month angiographic FU</li> <li>2-year clinical FU</li> </ul> <p><b>Key results (1-yr. n=28)</b></p> <ul style="list-style-type: none"> <li>▲ B2/C: 76.7%</li> <li>▲ MACE: 0%</li> <li>▲ TLR: 0%</li> <li>▲ ST: 0%</li> </ul> <p>1-year: Dani S, Costa RA, Joshi H, et al. EuroIntervention 2013;9:493-500</p>	<ul style="list-style-type: none"> <li>Multicenter (11 centers)</li> <li>250 patients(355 lesion)</li> <li>8-month angiographic FU</li> <li>5-year clinical FU</li> </ul> <p><b>Key results (1-yr. n=214)</b></p> <ul style="list-style-type: none"> <li>▲ B2/C: 63.4%</li> <li>▲ MACE: 8.9%</li> <li>▲ TLR: 6.1%</li> <li>▲ ST: 0.5%</li> </ul> <p>1-year: Seth A, Costa RA, Kaul U, et al. Asialntervention 2016;2:19-27</p>	<ul style="list-style-type: none"> <li>Multicenter (15 centers)</li> <li>1161 patients( 1312 lesions)</li> <li>Real-world registry</li> <li>1-year clinical FU</li> </ul> <p><b>Key results (1-yr.)</b></p> <ul style="list-style-type: none"> <li>▲ 41.1% diabetics</li> <li>▲ 52.5 % hypertensive</li> <li>▲ MACE: 2.35%</li> <li>▲ TLR: 0.5%</li> <li>▲ ST: 0.1%</li> </ul> <p>1-year: Jain RK, Chakravarthi P, Shetty R, et al. Indian Heart J 2016;68:599-603</p>

## BioMime™ TECHNICAL SPECIFICATIONS

**STENT**

Stent Material	: Cobalt Chromium (L605)
Strut Thickness	: 65µm (0.065mm or 0.026")
Stent Diameter (mm)	: 2.00, 2.25, 2.50, 2.75, 3.00, 3.50, 4.00, 4.50
Stent Length (mm)	: 8, 13, 16, 19, 24, 29, 32, 37, 40, 44, 48
Mean Recoil	: 3.38%
Mean Foreshortening	: 0.29%

**DRUG/POLYMER**

Drug	: Sirolimus
Equivalent Drug Dose	: 1.25 µg/ mm <sup>2</sup>
Polymer	: Biodegradable & Biocompatible (PLLA + PLGA)

**DELIVERY SYSTEM**

Delivery System	: Rapid Exchange
Nominal Pressure	: 9 atm (Refer IFU)
Rated Burst Pressure	: Rated Burst Pressure: 14/16 atm*
*RBP 14 atm for 4.50 mm diameter, all lengths.	
*RBP 14 atm for all diameter with length >40mm. (Refer IFU for more details)	
Balloon Overhang	: ≤ 0.5 mm
Shaft Outer Diameter	: Proximal: 2.13 F

Radiopaque Markers	: Two Platinum / Iridium Markers
Usable Catheter Length	: 142 cm (Refer IFU for more details)
Shaft Outer Profile	:
Proximal 1.98F (All balloon Dia with length <41mm)	:
Proximal 2.13F (All balloon Dia with length >41mm)	:
Distal 2.4F (2.00 mm Dia with length <41mm)	:
Distal 2.7F (2.00 mm Dia with length > 41mm, 2.25 to 4.50 mm Dia; all length)	:
Guide Catheter Compatibility	: 5F (Min. I. D. 0.056" / 1.42 mm)
Tip Entry Profile	: 0.016"
<b>Crossing Profile</b>	: <b>Stent Diameter</b>

	2.00 mm	0.83mm/0.033"
	2.25 mm	0.85mm/0.033"
	2.50 mm	0.91mm/0.036"
	2.75 mm	0.98mm/0.039"
	3.00 mm	0.99mm/0.039"
	3.50 mm	1.06mm/0.042"
	4.00 mm	1.16mm/0.046"
	4.50 mm	1.19mm/0.047"
Max. Guidewire	: 0.014" (0.36)	

## BioMime™ ORDERING INFORMATION

Dia/Length	8 mm	13 mm	16 mm	19 mm	24 mm	29 mm
2.00 mm	-	BIL20013	BIL20016	BIL20019	BIL20024	<b>BIL20029</b>
2.25 mm	BIL22508	BIL22513	BIL22516	BIL22519	BIL22524	BIL22529
2.50 mm	BIL25008	BIL25013	BIL25016	BIL25019	BIL25024	BIL25029
2.75 mm	BIL27508	BIL27513	BIL27516	BIL27519	BIL27524	BIL27529
3.00 mm	BIL30008	BIL30013	BIL30016	BIL30019	BIL30024	BIL30029
3.50 mm	BIL35008	BIL35013	BIL35016	BIL35019	BIL35024	BIL35029
4.00 mm	BIL40008	BIL40013	BIL40016	BIL40019	BIL40024	BIL40029
4.50 mm	BIL45008	BIL45013	BIL45016	BIL45019	BIL45024	BIL45029

Dia/Length	32 mm	37 mm	40 mm	44 mm	48 mm
2.00 mm	<b>BIL20032</b>	<b>BIL20037</b>	<b>BIL20040</b>	<b>BIL20044</b>	<b>BIL20048</b>
2.25 mm	BIL22532	BIL22537	BIL22540	<b>BIL22544</b>	<b>BIL22548</b>
2.50 mm	BIL25032	BIL25037	BIL25040	BIL25044	BIL25048
2.75 mm	BIL27532	BIL27537	BIL27540	BIL27544	BIL27548
3.00 mm	BIL30032	BIL30037	BIL30040	BIL30044	BIL30048
3.50 mm	BIL35032	BIL35037	BIL35040	BIL35044	BIL35048
4.00 mm	BIL40032	BIL40037	BIL40040	<b>BIL40044</b>	<b>BIL40048</b>
4.50 mm	BIL45032	BIL45037	BIL45040	<b>BIL45044</b>	<b>BIL45048</b>

Contact your country local Meril sales representative for availability of sizes highlighted in Yellow

BioMime™ is a registered trademark of Meril Life Sciences Pvt. Ltd.



More to Life

**Manufacturer**  
**Meril Life Sciences Pvt. Ltd.**  
Survey No. 135/139, Bilakhia House,  
Muktanand Marg, Chala,  
Vapi 396 191,  
Gujarat, India.  
T: +91 260 240 8000

**Meril Life Sciences Pvt. Ltd.**  
301, A - Wing, Business Square,  
Chakala, Andheri Kurla Road,  
Andheri East, Mumbai 400 093  
T: + 91 22 39350700  
F: + 91 22 39350777  
E: askinfo@merillife.com

**Meril, Inc.**  
2436 Emrick Boulevard,  
Bethlehem, PA - 18020  
T: + 610 500 2080  
F: + 610 317 1672

**Meril South America**  
Doc Med LTDA Al. dos Tupiniquins,  
1079 - Cep. 04077-003 - Moema,  
Sao Paulo, Brazil.  
T: +55 11 3624 5935  
F: +55 11 3624 5936

**Meril GmbH.**  
Bornheimer Strasse 135-137,  
D-53119 Bonn,  
Germany.  
T: +49 228 7100 4000  
F: +49 228 7100 4001

**Meril Tibbi Cihazlar**  
Meril Tibbi Cihazlar İmalat ve Ticaret A.Ş.  
İçeranköy Mah. Çetinkaya Sok. Prestij Plaza No:28  
Kat:4 Ataşehir, 34752  
İstanbul / Turkey  
T: +90 216 641 44 24  
F: +90 216 641 44 25

**Meril China Co. Ltd.**  
Room 2301B, 23F, Lixin Plaza,  
No 90, South Hubin Road,  
Xiamen China  
T: 0086-592-5368505  
F: 0086-592-5368519

**Meril SA Pty. Ltd.**  
102, 104, S101 and S102,  
Boulevard West Office Park,  
142 Western Service Road,  
Erf 813 Woodmead Extension 17  
Sandton, Johannesburg – 2191  
South Africa  
T: +27 11 465-2049  
F: +27 86 471 7941

**Meril Medical LLC.**  
Nauchnyi Proezd 19,  
Moscow, Russia – 117 246.  
Office - +7 495 772 7643

**EU representative.**  
Obelis S.A Bd, General Wahis 53,  
1030, Brussels, Belgium.  
T: +32 2 732 5954  
F: +32 2 732 6003  
E mail@obelis.net

E askinfo@merillife.com  
W www.merillife.com



For the use of a Registered Medical Practitioner of Hospital or Laboratory only

BIO-1/BROCHURE 003/MLS/202006007/GLOBAL

**biomime™**  
Sirolimus Eluting Coronary Stent System

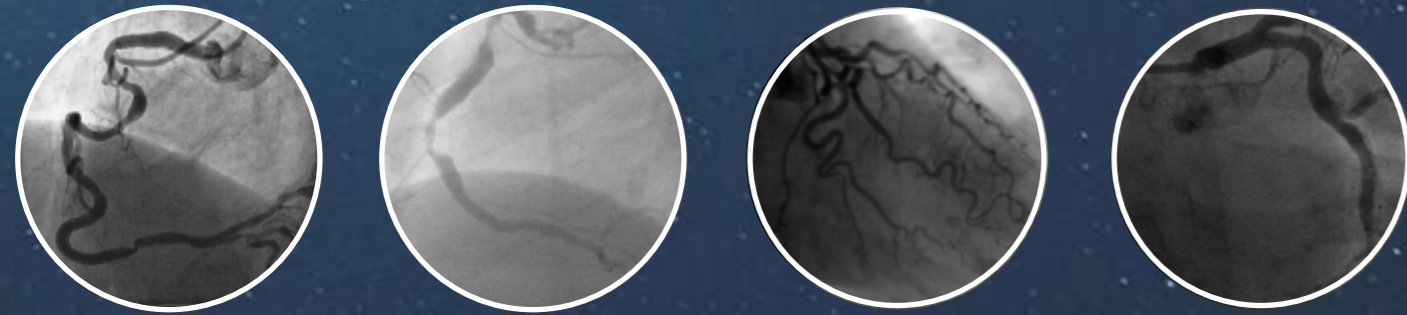
**Delivered As Desired**



# biomime™

## Sirolimus Eluting Coronary Stent System

With BioMime™, now complex lesions can be treated with ease. Achieves acute procedural success with proven long term clinical safety and efficacy.



Hybrid cell design comprising of an intelligent mix of open and close cells resulting in excellent radial strength with a high flexibility



Reinforced hypo tube for improved hub-to-tip force transfer

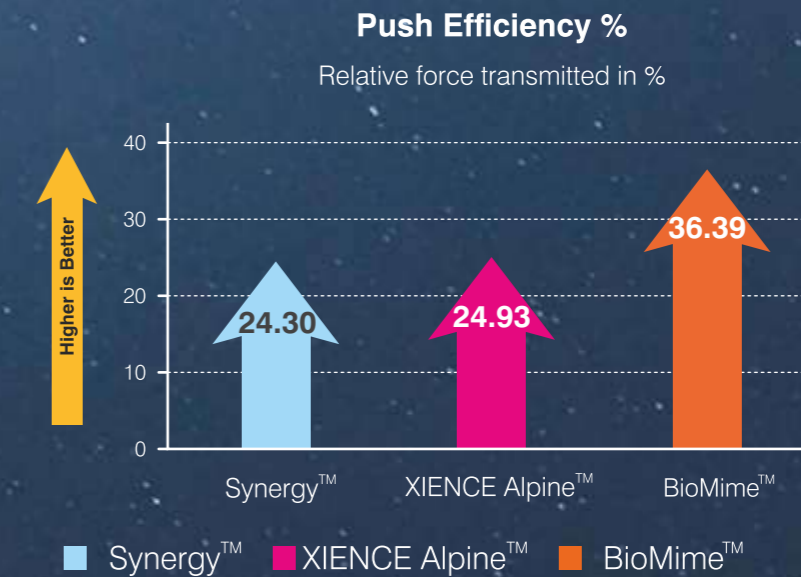
0.016" Tip Entry Profile



Elongated distal tip:  
 Biomime Xepedient :  $3.5 \pm 0.5$  mm for balloon diameter 2.25 mm to 4.50 mm,  
 Taper balloon and  $5.00 \pm 0.5$  mm for balloon diameter 2.00 mm  
 Biomime Lineage :  $7.00 \pm 0.5$  mm  
 Biomime Natec :  $5.20 \pm 1.00$  mm

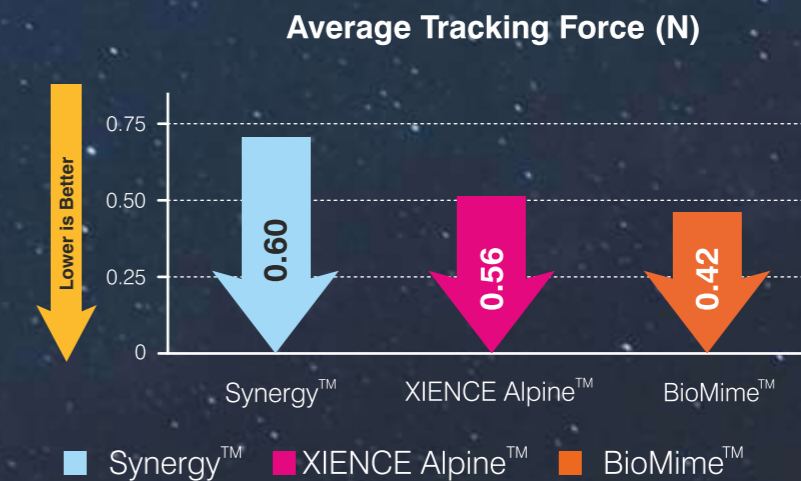
New Monolithic Delivery System for enhanced pushability and excellent kink resistance

### Improved Pushability from hub-to-tip\*



**50%**  
Better Push Efficiency

### Improved Trackability in difficult anatomies\*



**30%**  
Lesser Tracking Force<sup>s</sup>

\* Tests performed by and data on file at Meril Life Sciences Pvt. Ltd. XIENCE Alpine™ is a trademark of Abbott Laboratories. Synergy™ is a trademark of Boston Scientific.  
<sup>s</sup> Test performed using Lineage delivery system.

### Proven BioMime™ Stent Design

- 65µm Strut Thickness for All Sizes
- Biodegradable Polymer Coating
- Sirolimus Drug Elution (1.25µg/mm<sup>2</sup>)
- Morphology Mediated Expansion

