

Technical specifications

Balloon material	Multi-layered polyamide
Balloon fold	Tri-fold
Hydrophilic coating	Selective hydrophilic coating at distal shaft including balloon tip.
Tip entry profile	0.016" (0.41 mm)
Shaft diameter	Proximal 1.95F, Distal 2.6F
Catheter length	140 cm
Rapid exchange length	25 cm
Markers on proximal shaft	90 cm & 100 cm
Maximum recommended guidewire	0.014" (0.36 mm)
Guide catheter compatibility	5F
Nominal pressure	12 atm
Rated burst pressure	20 atm (18 atm for 5 mm)

Compliance chart

Pressure [atm]	2.00 mm	2.25 mm	2.50 mm	2.75 mm	3.00 mm	3.50 mm	4.00 mm	4.50 mm	5.00 mm
8	1.96	2.18	2.44	2.69	2.88	3.42	3.9	4.35	4.92
10	1.99	2.23	2.48	2.73	2.95	3.46	3.95	4.43	4.96
12	2.02	2.26	2.52	2.76	3.01	3.5	4	4.5	5
14	2.05	2.3	2.56	2.8	3.05	3.54	4.05	4.55	5.07
16	2.08	2.34	2.6	2.83	3.09	3.58	4.1	4.62	5.14
18	2.11	2.38	2.64	2.88	3.13	3.63	4.16	4.69	5.22
20	2.14	2.42	2.68	2.93	3.17	3.67	4.21	4.75	5.28
21	2.15	2.43	2.69	2.94	3.18	3.68	4.22	4.76	5.29
22	2.16	2.44	2.7	2.95	3.19	3.69	4.23	4.77	5.3
23	2.18	2.46	2.72	2.97	3.21	3.71	4.25	4.79	5.32
24	2.2	2.48	2.74	2.99	3.23	3.73	4.27	4.81	5.34

■ Nominal Pressure ■ Rated Burst Pressure

Size matrix and ordering information

Pipit NC SKUs [†]	Length (mm)					
	6	8	10	12	15	20
2.00	FGNT200006	FGNT200008	FGNT200010	FGNT200012	FGNT200015	x
2.25	FGNT225006	FGNT225008	FGNT225010	FGNT225012	FGNT225015	x
2.50	FGNT250006	FGNT250008	FGNT250010	FGNT250012	FGNT250015	FGNT250020
2.75	FGNT275006	FGNT275008	FGNT275010	FGNT275012	FGNT275015	FGNT275020
3.00	FGNT300006	FGNT300008	FGNT300010	FGNT300012	FGNT300015	FGNT300020
3.50	FGNT350006	FGNT350008	FGNT350010	FGNT350012	FGNT350015	FGNT350020
4.00	x	FGNT400008	FGNT400010	FGNT400012	FGNT400015	x
4.50	x	FGNT450008	FGNT450010	FGNT450012	FGNT450015	x
5.00	x	FGNT500008	FGNT500010	FGNT500012	FGNT500015	x

[†]Data on file. Internal bench test at RBP. Fluoroscopic test & surveys.

[†]SKU- Stock keeping unit

Disclaimer: Pipit NC is a trademark of SMT. Specifications are subject to modification, revision and improvement. Accuforce is a trademark of Terumo Corporation, Emerge is a trademark of Boston Scientific, Pantera Leo is a trademark of Biotronik SE & Co. KG., NC Trek is a trademark of Abbott.

Registered Office: Sahajand Medical Technologies Limited
 'Sahajand Estate', Wakharia Wadi, Near Dabholi Char Rasta, Ved Road, Surat 395004, Gujarat, INDIA Tel.: +91 261 6112800
 Fax: +91 261 6112801 • CIN: US3119612001PL0040121 • www.smtpl.com



Uniform expansion
with
No Dog-bone effect*



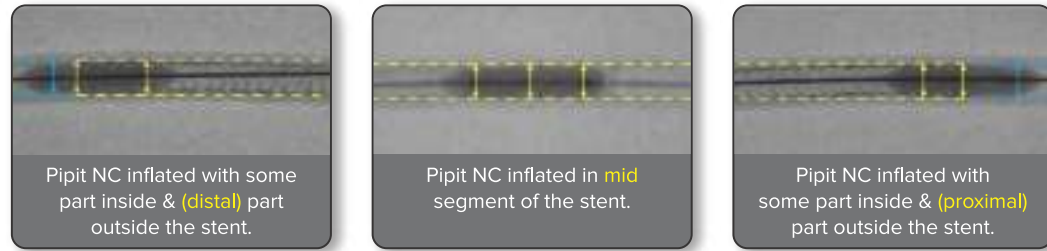
NT/BRO/EN01 REV 02

NC



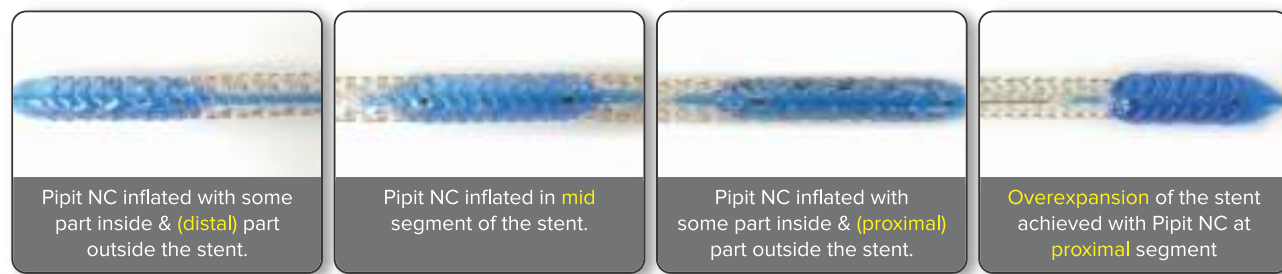
Uniform expansion with No Dog-bone effect*

Fluoroscopic evidence



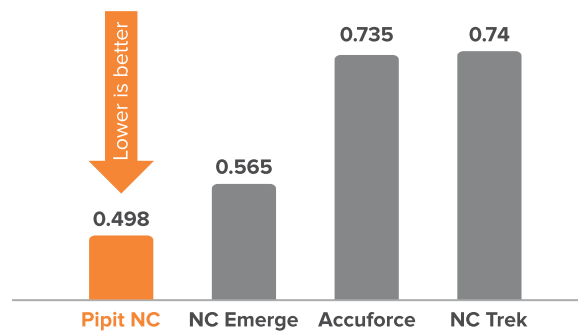
Disclaimer : Bench test conducted on 3.5 mm Pipit NC balloon under fluoroscopic guidance. Bench test data on SMT File. Bench test data may not be indicative of clinical performance.

Bench test



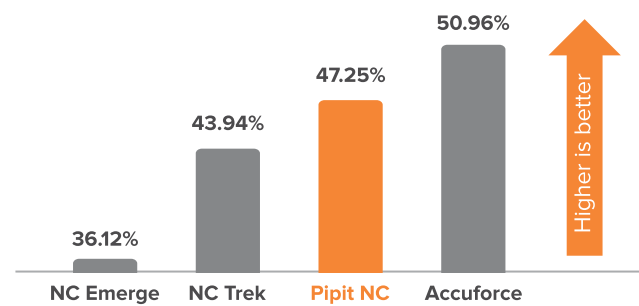
Disclaimer : Bench test conducted on 3.00 mm Pipit NC balloon & stent (3.00 mm). For overexpansion Pipit NC 4.0 mm. Bench test data on SMT file. Bench test data may not be indicative of clinical performance.

Lowest peak track force* (N)

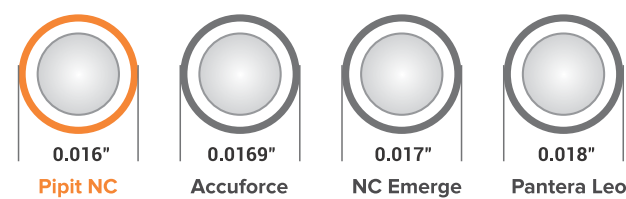


Best-in-class pushability*

Efficiency in transfer of push force from hub to tip (%)



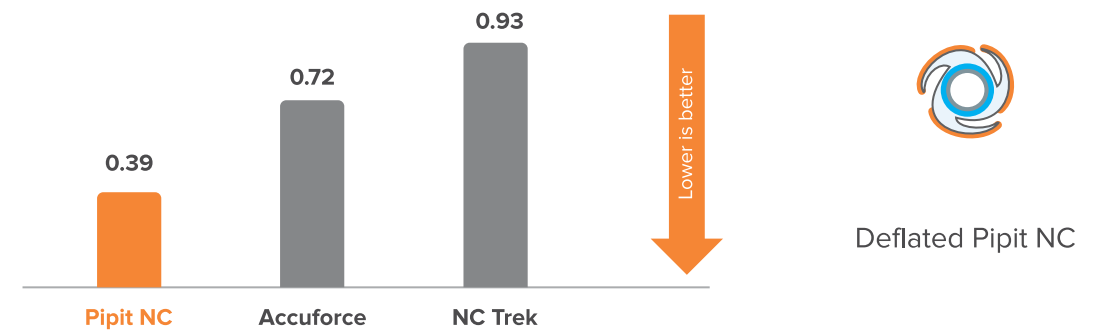
Low tip entry profile (0.41 mm / 0.016")



Source: Product brochures / marketing collaterals of respective brands

Low rewrap profile*

Average max force to re-cross (N)



Best-in-class shape memory profile due to multi-layered balloon material and improved manufacturing process



Hydrophilic coating is applied on the folded balloon which leads to coated - uncoated balloon surface

- During the folded state, hydrophilic coating helps in trackability
- During inflation, uncoated portion helps in anchoring the balloon and prevents slippage

Kink-resistant shaft

Proximal & distal shaft of balloon had no kinks or lumen collapse at turning sequence 1, 2, 3, 4.

Turning sequence	Turning radius (mm)
4	5
3	7.5
2	10
1	12.5



Wrap the catheter such that it covers half of the circumference

Numbers 1,2,3,4 denote the turning sequence

Data on file. *Bench test results may not necessarily be indicative of clinical performance. Test performed by and data on file at Sahajanand Medical Technologies Limited. Testing performed on Pipit (PTCA Balloon Dilatation Catheter - Non-Compliant) 3.50mmX 15mm, NC Emerge (3.50mmX 15mm), Accuforce NC (3.50mmX 15mm), NC Trek (3.50mmX 15mm)



CE
2460



Key Features

- 5F compatible
- Extensive size matrix
- **Quick Inflation & Deflation** SMT's proprietary technology ensures quick deflation time of < 8 seconds (Lower deflation time results in reduced ischemic complications)
- Kink Resistant Shaft
- Low tip entry profile, Low crossing profile

5F
compatible





Technical Specifications

Guiding Catheter Compatibility: 5F

Balloon Material	Nylon 12
Balloon Fold	3-fold memory
Balloon diameter	2mm-4.5mm
Balloon length	9mm-49mm
Tip entry profile	0.016" (0.41mm)
Shaft diameter	Proximal 1.95F, Distal 2.67F
Catheter length	140cm
Rapid exchange length	25cm
Markers on the proximal shaft	90cm and 100cm
Maximum recommended guidewire	0.014" (0.36mm)
Guide catheter compatibility	5F Compatible

Available Sizes

Balloon Diameter	Balloon Length (mm)											
	9	13	15	17	20	25	29	33	37	41	45	49
2.00 mm	✓	✓	✓	✓	✓	✓	✓	✓	✓	✓	✓	✓
2.25 mm	✓	✓	✓	✓	✓	✓	✓	✓	✓	✓	✓	✓
2.50 mm	✓	✓	✓	✓	✓	✓	✓	✓	✓	✓	✓	✓
2.75 mm	✓	✓	✓	✓	✓	✓	✓	✓	✓	✓	✓	✓
3.00 mm	✓	✓	✓	✓	✓	✓	✓	✓	✓	✓	✓	✓
3.50 mm	✓	✓	✓	✓	✓	✓	✓	✓	✓	✓	✓	✓
4.00 mm	✓	✓	✓	✓	✓	✓	✓	✓	✓	✓	✓	✓
4.50 mm	✓	✓	✓	✓	✓	✓	✓	✓	✓	✓	✓	✓

© 2021 Sahajanand Medical Technologies Limited – All rights reserved. Specifications are subject to modification, revision and improvement.
Pipit SC is a registered trademark of Sahajanand Medical Technologies Limited.

Caution: This product is intended for use by or under the direction of a physician. Prior to use, reference the instructions for use provided inside the product carton (when available), at www.smtpl.com for more detailed information on Indications, Contraindications, Warnings, Precautions and Adverse Events.

Information contained herein for distribution outside the U.S., Japan & France.

Illustrations are artist's representations only and should not be considered as engineering drawings or photographs. Photos on file at Sahajanand Medical Technologies Limited.

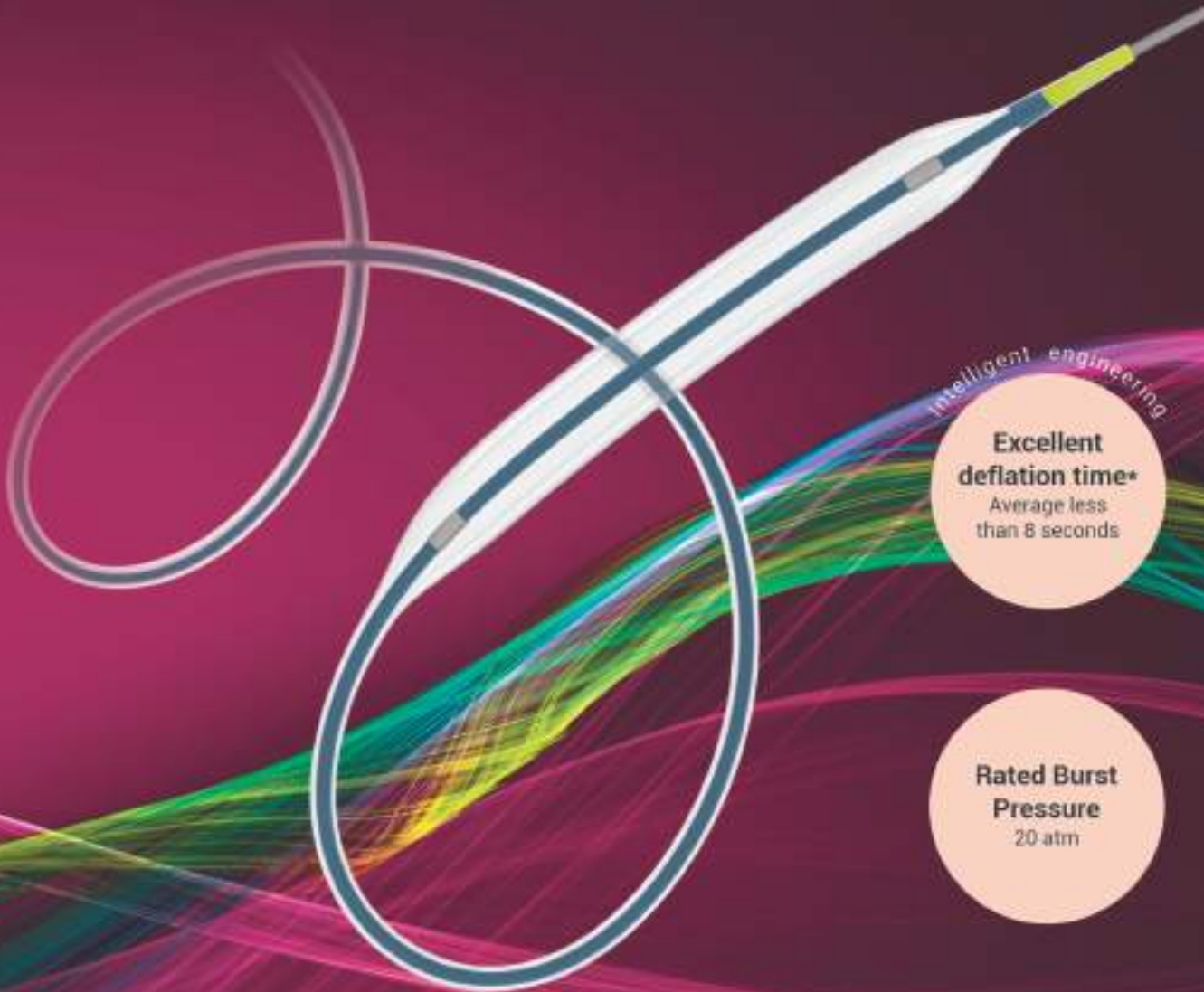


Registered Office:
Sahajanand Medical Technologies Limited
"Sahajanand Estate", Wakharis Wadi, Near Dabholi Char Rasta, Ved Road,
Surat 395004, Gujarat, INDIA Tel.: +91 261 6112800 Fax: +91 261 6112801
Email: contact@smt.in Visit us at: www.smtpl.com
• CIN: U33119GJ2001PTC040121

Wilma[®] NC

NON-COMPLIANT PTCA BALLOON DILATATION CATHETER

CE
2460



Excellent deflation time*
Average less than 8 seconds

Rated Burst Pressure
20 atm

Ultra-low tip entry profile (0.41 mm / 0.016")



Brand A

< 0.018" >



Wilma

< 0.016" >

Key Features

- Low diameter growth between nominal and rated burst pressure (lowest among current generation of NC balloons)
- Low entry & crossing profile
- Predictable balloon COMPLIANCE - to allow precise diameter sizing
- Short INFLATION & DEFLATION Time
- Kink Resistant Shaft

Wilma[®] NC

NON-COMPLIANT PTCB BALLOON DILATATION CATHETER

Enhanced Pushability & Trackability

- Highly flexible distal shaft
- PTFE Coated Proximal Shaft

CE
2460

Growth Between Nominal and Rated Burst Pressure (3.0 mm Balloon)



Technical Specifications

Guiding Catheter Compatibility: 5F

Balloon Material	Nylon 12
Balloon Fold	3-fold memory
Balloon diameter	2mm-5mm
Balloon length	6mm-29mm
Tip entry profile	0.016" (0.41mm)
Excellent deflation time	Average less than 8 seconds
Shaft diameter	Proximal 1.95F, Distal 2.67F
Catheter length	140cm
Rapid exchange length	25cm
Markers on the proximal shaft	90cm and 100cm
Maximum recommended guidewire	0.014" (0.36mm)
Guidecatheter compatibility	5F Compatible

Size Matrix

Balloon Diameter	Balloon Length (mm)							
	06	08	10	12	15	20	25	29
2.00 mm	✓	✓	✓	✓	✓	✓	✓	✓
2.25 mm	✓	✓	✓	✓	✓	✓	✓	✓
2.50 mm	✓	✓	✓	✓	✓	✓	✓	✓
2.75 mm	✓	✓	✓	✓	✓	✓	✓	✓
3.00 mm	✓	✓	✓	✓	✓	✓	✓	✓
3.50 mm	✓	✓	✓	✓	✓	✓	✓	✓
4.00 mm	-	✓	✓	✓	✓	✓	✓	✓
4.50 mm	-	-	✓	✓	✓	✓	✓	✓
5.00 mm	-	-	✓	✓	✓	✓	✓	✓

✓ Available sizes

Sahajanand Medical Technologies Limited hereby referred as SMT

© 2021 SMT. All rights reserved. Wilma NC is a registered trademark of SMT.

Specifications are subject to modification, revision and improvement.

Caution: This product is intended for use by or under the direction of a physician. Prior to use, reference the instructions for use provided inside the product carton (when available), at www.smtpl.com for

more detailed information on indications, contraindications, warnings, precautions and adverse events.

Illustration covered herein for distribution outside the U.S., Japan & France.

Not certified by and sold on behalf of SMT. Illustrations are artist's representations only and should not be considered as engineering drawings or photographs. Photos on file at SMT.

Powersail is a registered trademark of Abbott Cardiovascular Systems.

Stormer & Sprinter are trademarks of Medtronic Inc. or its affiliates.



Sahajanand Medical Technologies Limited

"Sahajanand Estate", Wakhanra Wadi, Near Dabhali Char Rasta, Ved Road, Surat 395004, Gujarat, INDIA

Tel: +91 261 6112800 Fax: +91 261 6112801 Email: contact@sahmed.com Visit us at: www.smtpl.com

+ CIN: U031199,0001PTC040121

WMBRC-EN01 REV 05

Wilma[®] SC

SEMI-COMPLIANT PTCA BALLOON DILATATION CATHETER

CE
2460

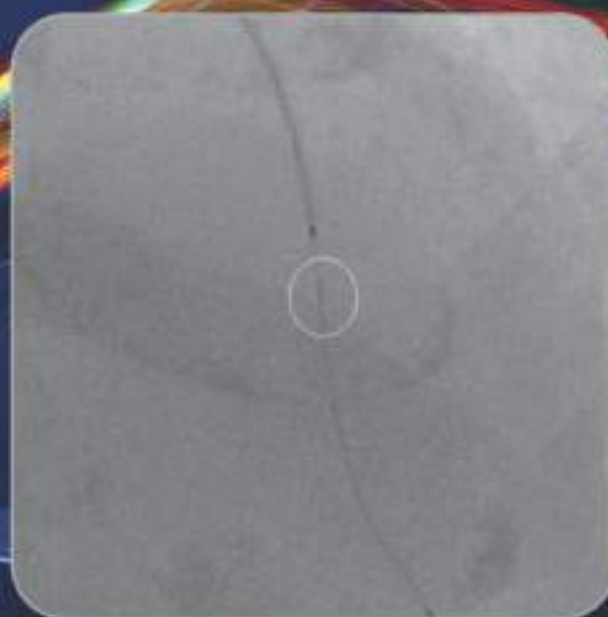
Tapered Radio-opaque Tip

For better visibility of the balloon during PCI procedure

Intelligent engineering

Excellent deflation time

Average less than 8 seconds

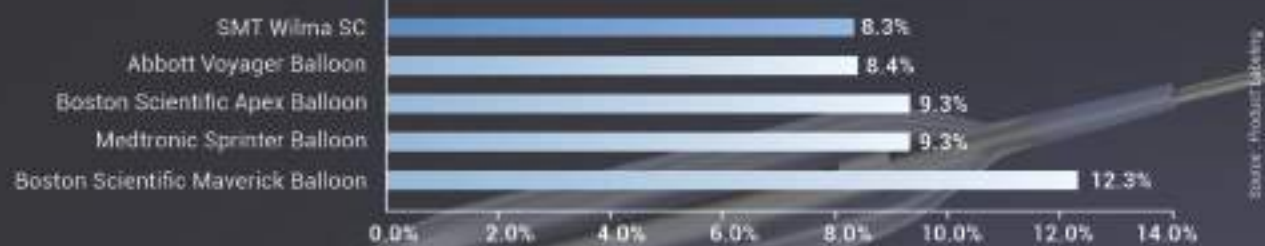


Wilma SC

Key Features

- Low tip entry profile
- Low crossing profile
- **Quick Inflation & Deflation** SMT's proprietary technology ensures quick deflation time of < 8 seconds (Lower deflation time results in reduced ischemic complications)
- Kink Resistant Shaft

Growth Between Nominal and Rated Burst Pressure (3.0 mm Balloon)



Technical Specifications

Guiding Catheter Compatibility: 5F

Balloon Material	Nylon 12
Balloon Fold	3-fold memory
Balloon diameter	2mm - 4.5mm
Balloon length	9mm - 49mm
Tip entry profile	0.016" (0.41mm)
Excellent deflation time	Average less than 8 seconds
Shaft diameter	Proximal 1.95F, Distal 2.67F
Catheter length	140cm
Rapid exchange length	25cm
Markers on the proximal shaft	90cm and 100cm
Maximum recommended guidewire	0.014" (0.36mm)
Guidecatheter compatibility	5F Compatible

Size Matrix

Balloon Diameter	Balloon Length (mm)											
	9	13	15	17	20	25	29	33	37	41	45	49
2.00 mm	✓	✓	✓	✓	✓	✓	✓	✓	✓	✓	✓	✓
2.25 mm	✓	✓	✓	✓	✓	✓	✓	✓	✓	✓	✓	✓
2.50 mm	✓	✓	✓	✓	✓	✓	✓	✓	✓	✓	✓	✓
2.75 mm	✓	✓	✓	✓	✓	✓	✓	✓	✓	✓	✓	✓
3.00 mm	✓	✓	✓	✓	✓	✓	✓	✓	✓	✓	✓	✓
3.50 mm	✓	✓	✓	✓	✓	✓	✓	✓	✓	✓	✓	✓
4.00 mm	✓	✓	✓	✓	✓	✓	✓	✓	✓	✓	✓	✓
4.50 mm	✓	✓	✓	✓	✓	✓	✓	✓	✓	✓	✓	✓

✓ Available sizes

Sahajanand Medical Technologies Limited (referred to as SMT)

© 2021 SMT - All rights reserved. Wilma SC is a registered trademark of SMT.

Specifications are subject to modification, revision and improvement.

Caution: This product is intended for use by or under the direction of a physician. Prior to use, reference the Instructions for Use provided inside the product carton (when available), at www.smtpl.com for

more detailed information on indications, Contraindications, Warnings, Precautions and Adverse Events.

Information contained herein for distribution outside the U.S., Japan & France.

Tests performed by user data on file at SMT. Illustrations are artist's representations only and should not be considered as engineering drawings or photographs. Photos on file at SMT.

Voyager is a registered trademark of Abbott Cardiovascular Systems. Apex & Maverick are registered trademarks of Boston Scientific.

Sprinter is a trademark of Medtronic Inc.



Sahajanand Medical Technologies Limited
 "Sahajanand Estate", Wakharis Wadi, Near Dabhali Char Rasta, Ved Road, Surat 395004, Gujarat, INDIA
 Tel: +91 261 6112800 Fax: +91 261 6112801 Email: contact@sahmed.com Visit us at: www.smtpl.com
 • CIN: U33119GJ2001PTC040121