

MeRes100TM

Sirolimus Eluting BioResorbable Vascular Scaffold System

Simply Sublime.

Meril

Cardiovascular



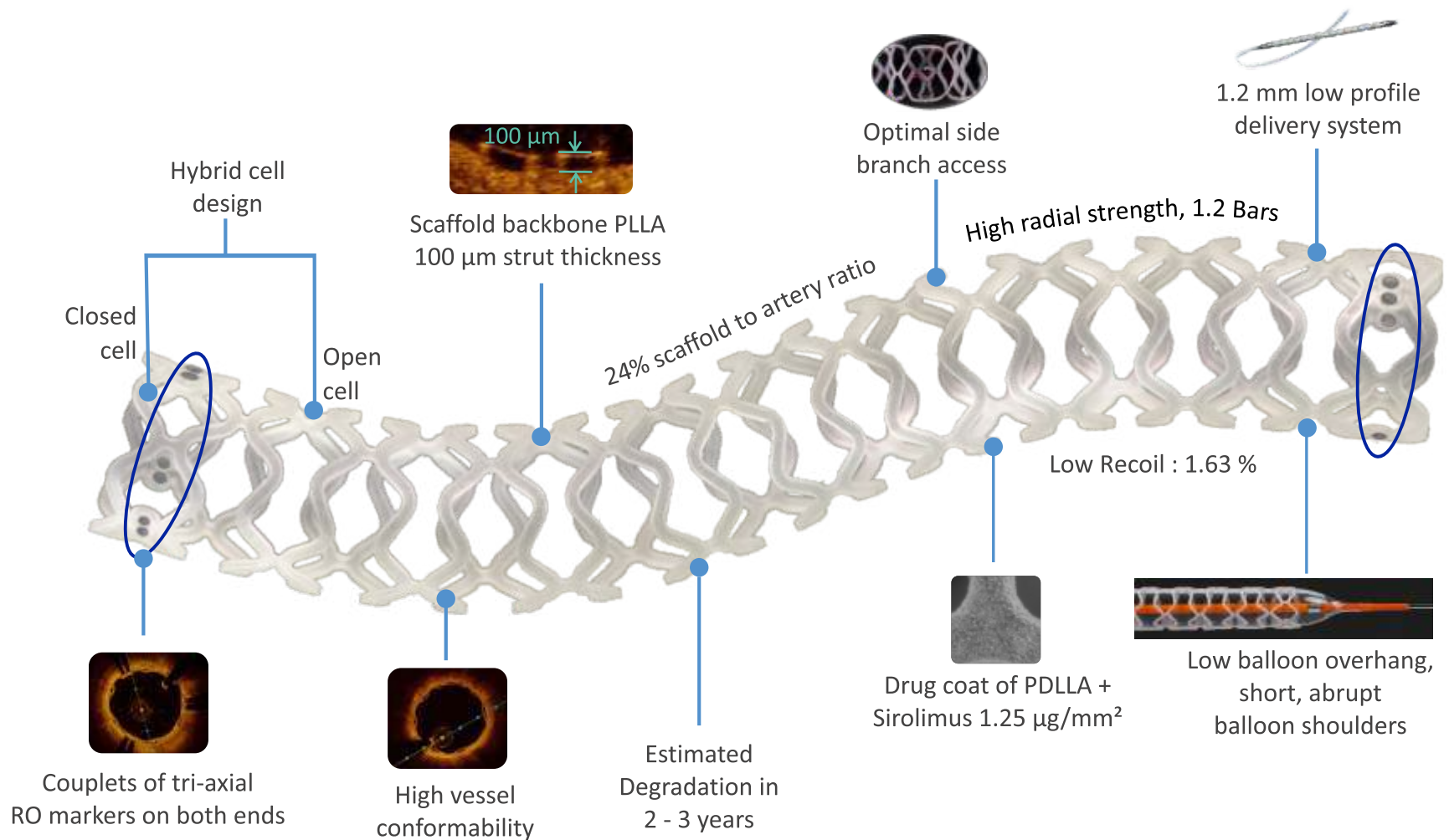


MeRes100TM

Sirolimus Eluting BioResorbable Vascular Scaffold System

Simply *Sublime*.

Next Generation BioResorbable Scaffold.



Size Matrix

Diameters: 2.75, 3.00, 3.25, 3.50, 4.00 mm

Lengths: 16, 19, 24, 29, 32, 40 mm



MeRes-1 FiM Study: Safety and Efficacy of BRS in 108 Patients with Single, De-novo Coronary Lesions (in up to 2 vessels)

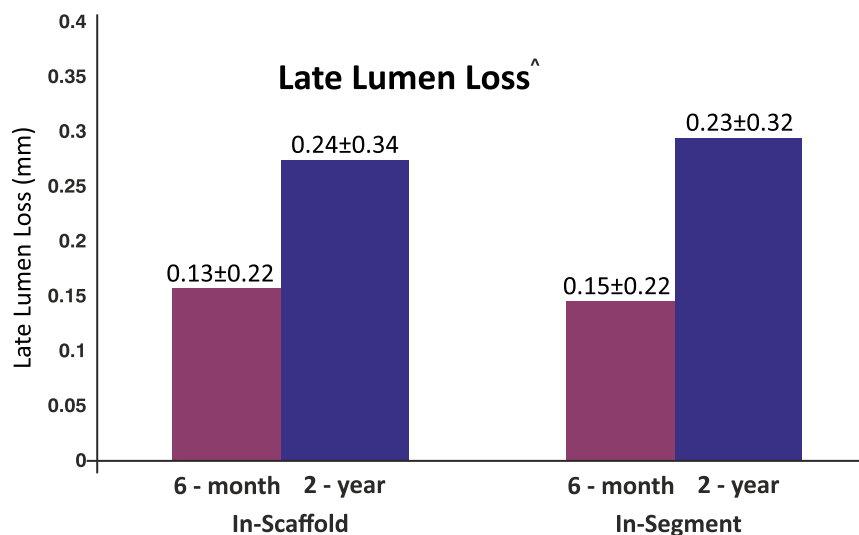
Clinical follow-up results

3-Year Follow-up

0% Scaffold Thrombosis
Cardiac Death
Myocardial Infarction

Events, n (%)	In-hospital N=108	1-month N=108	6-month N=108	1-year* N=107	2-year^ N=107	3-year^ N=107
MACE	0 (0%)	0 (0%)	0 (0%)	1 (0.93%)	2 (1.87%)	2 (1.87%)
Cardiac death	0 (0%)	0 (0%)	0 (0%)	0 (0%)	0 (0%)	0 (0%)
Myocardial infarction [#]	0 (0%)	0 (0%)	0 (0%)	0 (0%)	0 (0%)	0 (0%)
Ischemia-driven TLR	0 (0%)	0 (0%)	0 (0%)	1 (0.93%)	2 (1.87%)	2 (1.87%)
Scaffold thrombosis [§]	0 (0%)	0 (0%)	0 (0%)	0 (0%)	0 (0%)	0 (0%)

Myocardial Infarction defined as per WHO criteria; §ARC defined criteria.



Angiographic Core lab - CRC, Sao Paulo, Brazil

Paired assessment of OCT[^]

N=9	Post-Procedure	6-month	2-years
Mean abluminal scaffold area(mm ²)	8.06	8.64	8.39
Mean strut core area (mm ²)	0.14	0.11	0.06
% Covered struts	-	98.99%	99.24%

[^]OCT analysis done by Cardialysis BV, Rotterdam, The Netherlands

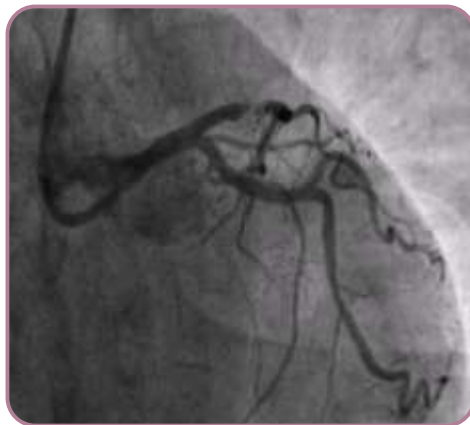
[^] Seth A, et al. Three-year clinical and two-year multimodality imaging outcomes of a thin-strut sirolimus-eluting bioresorbable vascular scaffold: MeRes-1 trial. EuroIntervention. 2019 Sep 20;15(7):607-614.

* Seth A, et al. First-in-human evaluation of a novel poly-L-lactide based sirolimus-eluting bioresorbable vascular scaffold for the treatment of de novo native coronary artery lesions: MeRes-1 trial. EuroIntervention. 2017 Jul;13(4):415-23.

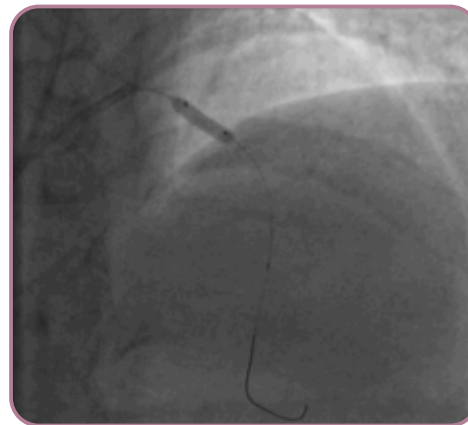
MeRes100 BRS Implantation

53 Years | Male | Diabetic | Hypertensive | No family history | Non-smoker | Stable angina

Diagnostic Angio



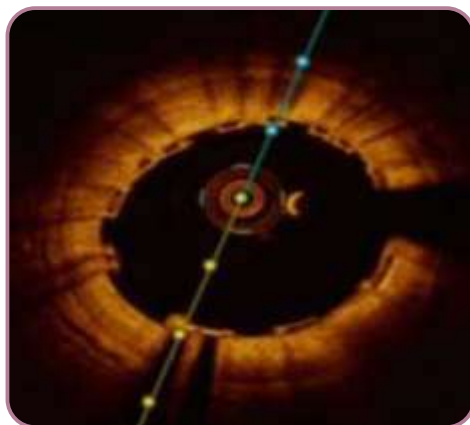
MeRes100 3.50 x 19 mm



Final Result



Baseline OCT



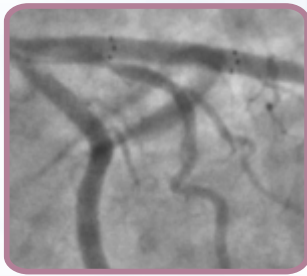
6-Months f/up



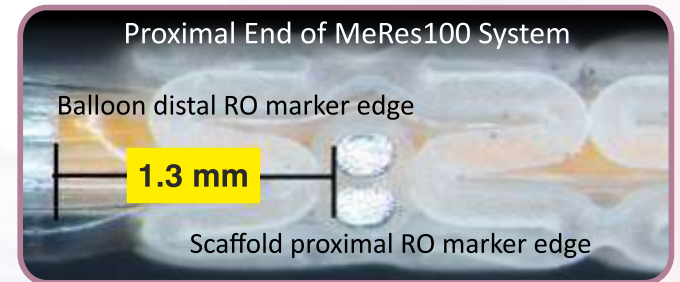
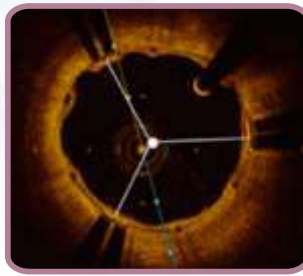
6-Months OCT f/up



MeRes100- BRS with Enhanced Radiopacity

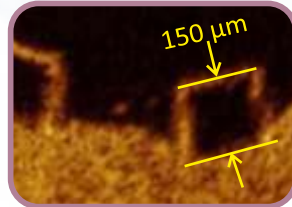
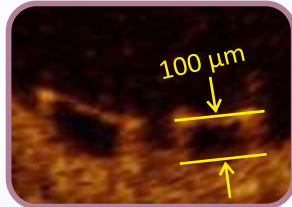


MeRes100 couplets of tri-axial RO markers on both ends of the scaffold, gives a sense of virtual tubing and high operator comfort.

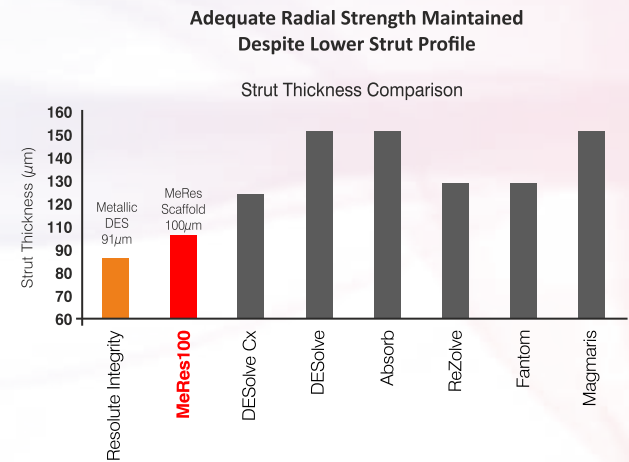


Distance from edge of Balloon RO marker (both proximal & distal) to edge of Scaffold RO = 1.3 mm

MeRes100 - BRS with Best-in-Class Strut Thickness



MeRes100 is a 100 µm strut thickness scaffold with a propensity to minimize vascular injury & ensure early endothelialization.

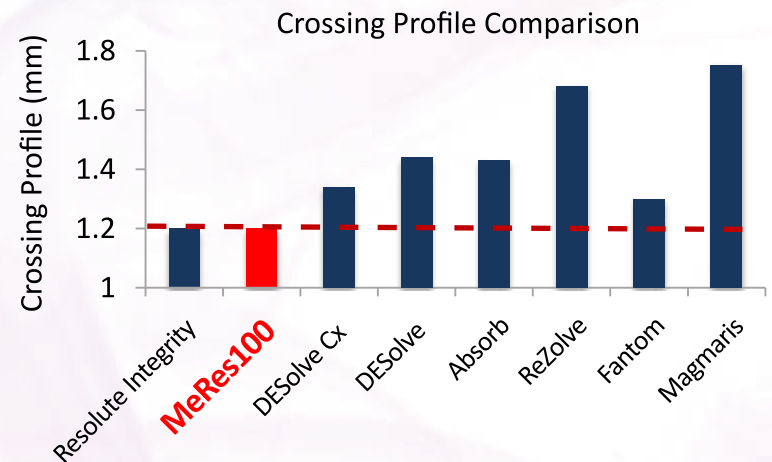


Unique manufacturing process, novel hybrid design concept incorporating strut width variability allows for best-in-class, **DES-like strut thickness** in MeRes100.

MeRes100 - BRS with Best-in-Class Crossing Profile



Average crossing profile of 1.2 mm for ϕ 3.00 mm



Unique crimping process, novel hybrid design concept incorporating low strut thickness allows for best-in-class, **DES-like crossing profile** in MeRes100.

6Fr
Guide Catheter
for all diameters



MeRes100 - BRS TECHNICAL SPECIFICATIONS

SCAFFOLD BACKBONE

Scaffold Material	: BioResorbable PLLA (Poly L-lactide)
Scaffold Strut Thickness	: 100 µm
Scaffold Diameters	: 2.75, 3.00, 3.25, 3.50, 4.00 mm
Scaffold Lengths	: 16, 19, 24, 29, 32, 40 mm

SCAFFOLD RO MARKERS

Tri-axial RO Markers	: Platinum (Couplets of tri-axial RO markers on both ends, 120° apart from each other)
----------------------	--

TOP COAT-DRUG+POLYMER

Drug	: Sirolimus
Equivalent Drug Dose	: 1.25 µg / mm ²
Polymer	: Bioresorbable PDLLA (Poly D, L-lactide)

DELIVERY SYSTEM

Delivery System	: Rapid Exchange
Nominal Pressure (NP)	: 9 atm (Refer labels for more details)
Rated Burst Pressure (RBP)	: 16 atm (Refer labels for more details)
Balloon Overhang	: < 1 mm
Shaft Outer Diameter	: (Refer IFU for more details) Proximal: 2.13F, Distal: 2.7F for lineage delivery system
Radiopaque Markers	: 2 - Platinum / Iridium
Usable Catheter Length	: 142 cm (Refer IFU for more details)
Guide Catheter Compatibility	: 6 F (Min. I D 0.070" / 1.8 mm)
Max. Guidewire	: 0.014" (0.36 mm)

MeRes100 - BRS ORDERING INFORMATION

Diameter / Lengths	16 mm	19 mm	24 mm
2.75 mm	MRS27516	MRS27519	MRS27524
3.00 mm	MRS30016	MRS30019	MRS30024
3.25 mm	MRS32516	MRS32519	MRS32524
3.50 mm	MRS35016	MRS35019	MRS35024
4.00 mm	MRS40016	MRS40019	MRS40024

Diameter / Lengths	29 mm	32 mm	40 mm
2.75 mm	MRS27529	MRS27532	MRS27540
3.00 mm	MRS30029	MRS30032	MRS30040
3.25 mm	MRS32529	MRS32532	MRS32540
3.50 mm	MRS35029	MRS35032	-
4.00 mm	MRS40029	-	-

MeRes100 is not approved by USFDA and not available for sale in USA.

Information for the use only in countries with applicable health authority product registrations.

Absorb is a product of Abbott Laboratories, Resolute Integrity is a product of Medtronic, DESolve and DESolve CX are products of Elixir Medical, ReZolve and Fantom are product of REVA Medical, Magmaris is a product of Biotronik AG.



More to Life

Manufacturer:

Meril Life Sciences Pvt. Ltd.
Survey No. 135/139, Bilakhia House,
Muktanand Marg, Chala, Vapi - 396 191,
Gujarat, India.
T +91 260 240 8000

Subsidiary companies:

Meril Life Sciences Pvt. Ltd.
301, A-Wing, Business Square,
Chakala, Andheri Kurla Road,
Andheri East, Mumbai 400 093
T +91 22 39350700
F +91 22 39350777

Meril, Inc.

2436 Emrick Boulevard,
Bethlehem, PA 18020
T +610 500 2080
F +610 317 1672

Meril South America

Doc Med LTDA
Al. dos Tupiniquins,
1079 - Cep: 04077-003 - Moema,
Sao Paulo, Brazil.
T +55 11 3624 5935
F +55 11 3624 5936

Meril GmbH.

Bornheimer Strasse 135-137,
D-53119 Bonn,
Germany.
T +49 228 7100 4000
F +49 228 7100 4001

Meril Tibbi Cihazlar

Meril Tibbi Cihazlar İmalat ve Ticaret A.Ş.
İçerenköy Mah. Çetinkaya Sok.
Prestij Plaza No:28
Kat:4 Ataşehir, 34752
İstanbul / Turkey
T +90 216 641 44 24
F +90 216 641 44 25

Meril China Co. Ltd.

2301b,23f, Lixin Plaza,
no 90, South Hubin Road,
Xiamen, China
T 0086-592-5368505
F 0086-592-5368519

Meril SA Pty. Ltd.

102, 104, S101 and S102,
Boulevard West Office Park,
142 Western Service Road,
Erf 813 Woodmead Extension 17
Sandton, Johannesburg – 2191
South Africa
T +27 11 465-2049
F +27 86 471 7941

Meril Medical LLC.

Nauchnyi Proezd 19,
Moscow , Russia – 117 246.
Office - +7 495 772 7643

EU representative.

Obelis S.A.
Bd. General Wahis 53,
1030, Brussels, Belgium.
T +32 2 732 5954
F +32 2 732 6003
E mail@obelis.net

E askinfo@merillife.com
W www.merillife.com

